



## Epson SureColor F2260 DTG / DTF

- Direct-to-garment (DTG) and direct-to-film DTFilm printer
- New UltraChrome® DG2 ink for improved imaging on fabric and film
- Pouch-based ink supply for reduced production cost with less waste
- Latest Epson high-performance PrecisionCore MicroTFP printhead
- Efficient operation with auto height adjustment, frame and frame-less loading
- Quiet fan-less operation with self-cleaning printhead and capping system
- Supplied with upgraded Epson Garment Creator 2 application software
- Garments produced with this printer are suitable for use by all ages
- Improved ergonomics for easier installation and more efficient operation
- Comprehensive 'heads-and-all' warranty with service cover extendable up to five years and supported by Epson Cloud Solution PORT<sup>1</sup>

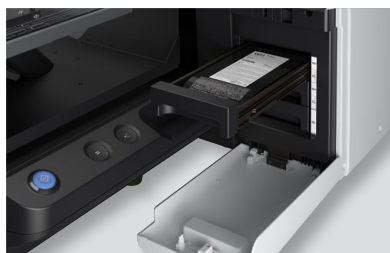
# Epson SureColor Fabric Range SC-F2260 Desktop DTG/DTF Printer

## Product Specifications

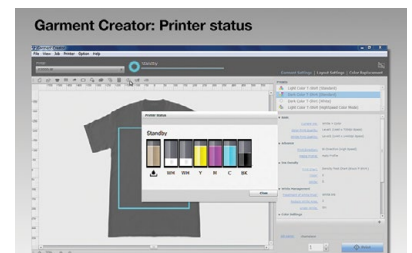
PRINTING TECHNOLOGY		WHAT'S IN THE BOX <sup>6</sup>
Printhead	Epson 1.33" PrecisionCore <sup>®</sup> MicroTFP™	Printer, power cord, 1 x set 800 ml pouches, 20 litre pre-treat solution, medium hanger platen and grip pad, waste tank, maintenance kit and head cleaning set, set up guide. All software delivered via web download. On-line manual with help. On-line PORT service.
Print Modes	Uni & Bi-directional	<b>CONFIGURATION OPTIONS<sup>1</sup></b>
Configuration	400 Nozzles x 8 lines	SCF2260W1Y Printer with 1Yr On-Site Wty
Maximum Resolution	1200 x 1200 dpi	SCF2260W3Y Printer with 1Yr On-Site Wty + 2Yr CoverPlus
Minimum Droplet Size	12.8 pl	SCF2260W5Y Printer with 1 Yr On-Site Wty + 4Yr CoverPlus
INK SYSTEM		OPTIONAL ACCESSORIES
Ink Type	Epson UltraChrome <sup>®</sup> DG2	C12C938911 Large Hanger Platen
Standard Configuration	CYMK + Dual White + Maint Liquid	C12C938991 Grooved Platen (for shirts with buttons or a zipper)
Loading	800 ml x 7 pouches, front tray system	C12C938931 Medium Hanger Platen
PERFORMANCE <sup>2</sup>		C12C939031 Small Hanger Platen
Standard Configuration	Clr + Wht: 89s Fast / 142s Prodn / 321s Quality Wht Only: 52s Fast / 86s Prodn / 213s Quality Clr Only: 28s Fast / 43s Prodn / 128s Quality)	C12C933951 Extra Small Platen
MEDIA SUPPORT <sup>3</sup>		C12C939051 Sleeve Platen
DTFilm Production	Various film & power combinations	CONSUMABLES
DTG Production	Cotton, polyester and mixed fibre garments	C13T54R900 800 ml Cleaning Liquid
Max Thickness / Weight	27 mm / 1.5 kg per garment	C13T54LB00 800 ml Maintenance Liquid
Max Print Area	Large Platen: 406 x 508 mm Medium & Grooved Platen: 335 x 406 mm	C13T54L100~400, A00 800 ml ink pouches (K/C/M/Y,Wh)
OPERATION		C13T43R100 20 L Cotton pre-treatment liquid (concentrate)
Control Panel	4.3" Colour touch LCD with USB print support <sup>4</sup>	C13T43R200 18 L Polyester pre-treatment liquid
Utility Software	Epson Edge Dashboard, communications driver, s/w & f/w updater, EpsonNet set-up, config & print	C13S400216 Head Cleaning Set kit
Application Software	Epson Garment Creator 2 & Cloud Solution PORT	C13T736200 Maintenance Kit
Interface	High Speed USB 2.0 and Ethernet 1000 Base-T	C13S210118 Large Hanger Platen grip pad
Memory	1GB	C13S210119 Medium Hanger Platen grip pad
ENVIRONMENTAL		C13S210120 Small Hanger Platen grip pad
Operational Temp	10-35°C	<sup>1</sup> Standard Warranty is 1 year for all non-consumable components including printheads when the printer is operated and maintained correctly and used with Genuine Epson UltraChrome DG2 ink. Cover can be extended up to a maximum total of 5 years through optional CoverPlus. Free on-site service is provided for limited areas across Australia and New Zealand with CoverPlus conditional on activation and connection of the printer to Epson Cloud Solution PORT. Please see relevant web site for full details.
Operational Humidity	20 to 80% (no condensation)	<sup>2</sup> Figures are print speeds only based on an image 254 x 203 mm in landscape; actual production times will depend on workflow, material selection, production process, print mode, equipment settings, computing platform, file format/size and networking.
Power Supply	AC 240 V 1.6 A, 50 Hz - 60 Hz	<sup>3</sup> Optimum DTG results will be achieved on garments with a moderate to loose weave and 50% or more natural fibre content. With the application of appropriate pre-treatment a wide range of single and mixed fibre fabrics garments can be supported however print adhesion and wash durability will vary. DTFilm is generally recommended for material with tight weave &/or elevated levels of synthetic content. Special care should be taken with fabrics that have been coated to repel dust &/or moisture. In all cases it is recommended that tests be performed to check image quality and wash/wear durability used prior to commencement of production.
Power Consumption	46 W Operating / 30 W Standby / 7 W Sleep	<sup>4</sup> Images must be pre-processed through Garment Creator and stored on a USB device no larger than 2 TB in FAT-32 format.
Operating Noise	37 dB	<sup>5</sup> The DTG and DTFilm process requires use of a heat press while DTF requires additional use of appropriate film and powder (an additional oven is also generally recommended); please consult your dealer about the optimal choice of product.
PHYSICAL		
Printer (without ink)	981 mm x 499 mm x 1361 mm (WxHxD), 95 kg	
Shipping Carton (Main Unit)	1434 mm x 897 mm x 1209 mm (WxHxD), 148 kg	



Rapid loading with tool-less macro and auto fine height adjustment



All front loading design with cost-effective pouch-based ink



Upgraded Epson Garment Creator 2 software for Macintosh<sup>®</sup> & Windows<sup>®</sup>



Epson is the registered trademark of Seiko Epson Corporation. All other names and company names used herein are for identification purpose only and are trademarks of their respective owners; Epson disclaims any and all rights. Specifications are subject to change without notice. Visit [www.epson.com.au](http://www.epson.com.au) or [www.epson.co.nz](http://www.epson.co.nz) for the latest information.

Epson Australia Pty Ltd  
Tel: 02 8899 3666  
[www.epson.com.au](http://www.epson.com.au)

Epson New Zealand  
Tel: 09 366 6855  
[www.epson.co.nz](http://www.epson.co.nz)

10/2024

ABN: 91 002 625 783

